



# WHY CHOOSE US

## Customized Solutions

Established in 2019, we are a rapidly growing company that provides customized concrete repairs and waterproofing applications to each client, based on their needs.

Our well-trained in-house forces provide the required solutions after a detailed inspection is done to determine the cause of the issue and design the best way to remediate it.



We offer customized waterproofing solutions while delivering exceptional service, to safeguard our clients' assets by providing high-quality environmentally friendly waterproofing applications.

## 01

### FULL RESTORATION

Concrete surfaces are fully repaired and restored to their original condition.

## 02

### CRACK REPAIR

Our applications are designed to repair and waterproof single defined and multiple cracks without having to recast the slab, unless specified by engineers.

Such rehabilitation is even done on concrete surfaces with embedded metal structures.

## 03

### THIN PATCH APPLICATIONS

High-strength industrial concrete adhesives allow for patches as thin as 5 mm, making even cold joint repair and balcony slope reversal possible.



**HOSPITALS**



**RESIDENTIAL**



**MUNICIPAL**



**INDUSTRIAL**



**EDUCATIONAL**



# .01

## **STAIRS**

Thin patch applications render stair demolition unnecessary – concrete steps can be fully repaired, which saves time and labour.

Stairs are fully repaired, and the weaker areas between steps (cold joints) are reinforced, completely restoring the staircase.



# .02

## **FLAT ROOFS & PLANTERS**

Both hot- and cold-applied roof surfaces are fully waterproofed, by following a specialized procedure. Roof planters are also repaired.

Before the roof membrane is applied, any necessary crack repair and patching are done. A fiberglass layer is installed inside the planters to ensure long-lasting waterproofing.

## .03

### **OUTDOOR REPAIRS**

Specialized materials allow for thin patches to be installed, which makes it possible to fully repair and restore concrete surfaces.

In most cases, recasting a concrete slab is unnecessary. Work is done on curbs, sidewalks, retaining walls, and more.



## .04

### **UTILITY ROOMS**

Industrial-strength materials ensure long-lasting quality concrete surface repairs even in utility, mechanical, and garbage rooms.

In addition to protecting the floors from mechanical intrusions, and chemical and oil spills they are exposed to, our specialized materials provide a durable, non-slip finish.



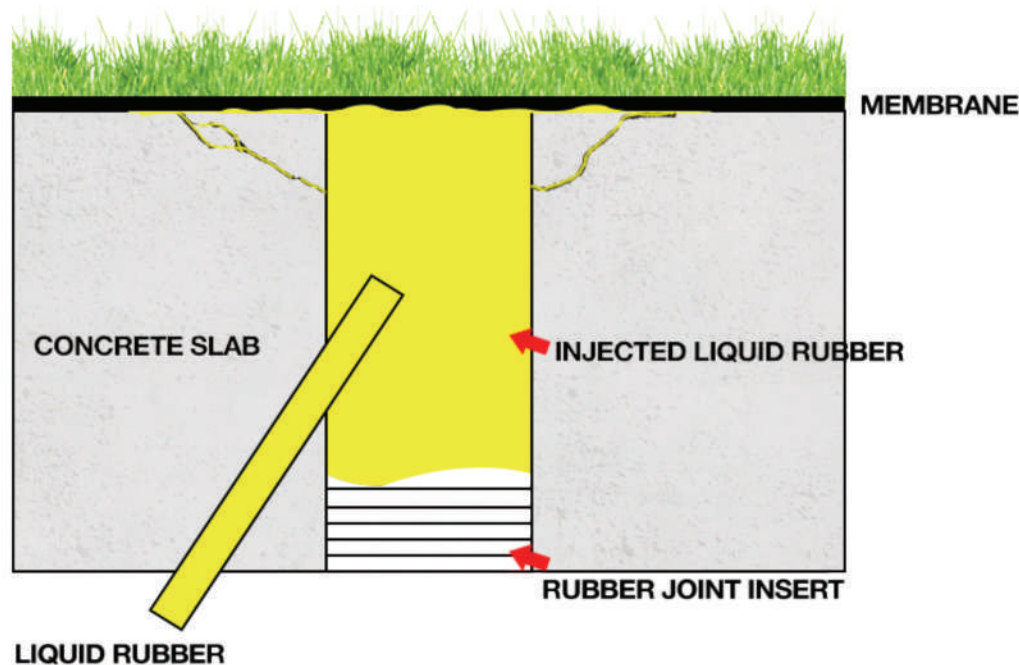
# EXPANSION JOINT & LEDGE BEAM REPAIR

Repairing joints from the bottom saves time and labour

It is common for expansion joints to leak because of cracks in the waterproofing membrane. We avoid excavation when waterproofing the joints located in the podium roofs of underground garages by injecting liquid rubber material directly into the expansion joints, from the bottom.

Waterproofing expansion joints located behind ledge beams poses an added challenge: it is necessary to drill through 40 cm of concrete to reach the joint that requires repair.

When waterproofing is completed, expansion joints work properly, allowing concrete slabs to fully expand and contract.



## 01

Specialized rubber rods are installed at the bottom of expansion joints, so that the liquid material that is injected does not run out.

## 02

Cracks are sealed permanently with the specialized waterproofing material. It displaces any accumulated water, completely filling the crack.

## 03

As all the cracks and voids are filled with the injected material, they become sealed, ensuring long-lasting repair of the waterproofing membrane.

# GREEN SKIN MEMBRANE SYSTEMS

Solvent-free, no-VOCs, hot spray-on application

Green Skin (polyurea-based) is a highly resilient super-polymer two-component material designed to aid in the protection of building infrastructure. Its unprecedented qualities allow application of any thickness at temperatures below freezing.

Green Skin is an environmentally friendly spray-on membrane that can be applied to a variety of surface types, seamlessly covering all joints.

This seamless waterproofing membrane has outstanding chemical resistance and mechanical properties. It is able to withstand static hydraulic pressure and hostile environments (between -40°C and +110°C).



## 01

Ideal for large-scale commercial applications – Green Skin cures in seconds and provides a continuous monolithic application.

## 02

It has been certified to withstand 25 years of freeze-saw cycles and can be applied at temperatures as low as -5°C.

## 03

It is fully customizable: curing rate between 30 seconds and 8 hours, variable thickness, softness and colour. UV protection can be added.

# PARKING GARAGES

Expansion joint and ledge beam waterproofing, column repair, patching and crack repair

## .01

### EXPANSION JOINTS

Proper expansion and contraction of the joints is ensured through the use of specialized materials.

## .02

### LEDGE BEAMS

Ledge beams and the expansion joints located behind them are waterproofed by injecting liquid materials through injection ports.

## .03

### COLUMNS

Load-carrying capacity of each column is fully restored, eliminating the need for rebuilding them.

## .04

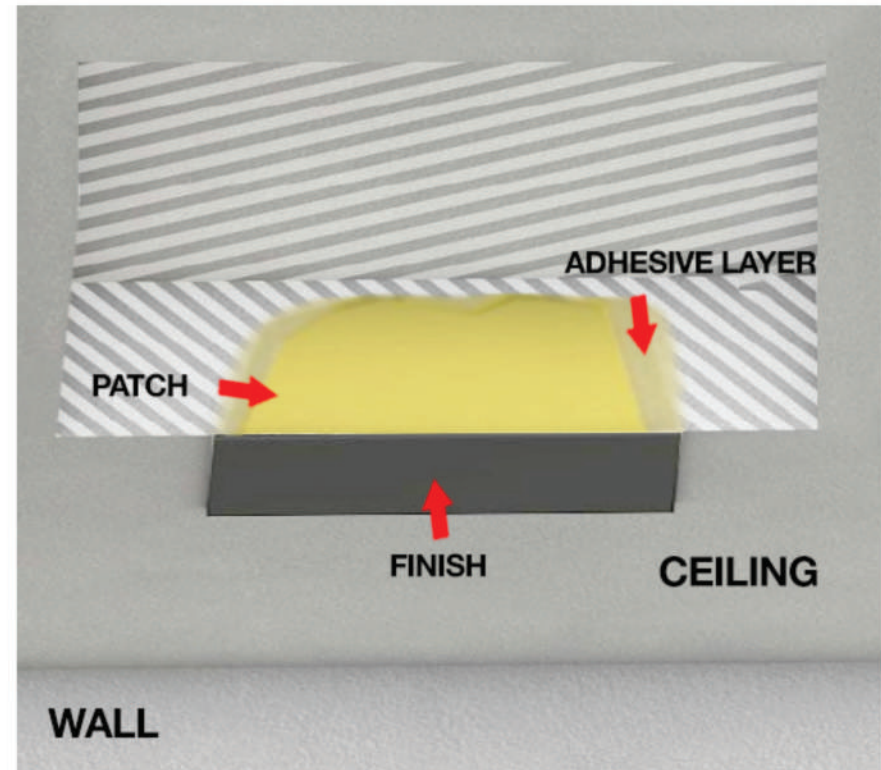
### PATCHING

Slab recasting is avoided by applying thin patches to repair delaminated concrete.

## .05

### CRACK REPAIR

Single defined and multiple cracks are repaired through specialized applications, ensuring long-lasting waterproofing.







**EXPANSION JOINTS**



**LEDGE BEAMS**



**COLUMNS**



**PATCHING**



**CRACK REPAIR**



**HYDRAULIC POCKETS**



**PATCHING**



**CRACK REPAIR**

# TUNNELS

Crack sealing, patching, and hydraulic pockets removal

## .01

### CRACK SEALING

All single defined and multiple cracks are sealed as a result of our repair and waterproofing procedures.



LIQUID RUBBER INJECTION

## .02

### PATCHING

Thin patch applications allow for repairs to be done on circular tunnel sealings.

## .03

### HYDRAULIC POCKETS REMOVAL

Hydraulic pockets form when water accumulates above the tunnel. They continue increasing in size, creating further pressure on the concrete structure underneath.

When specialized materials are injected through the cracks on tunnel ceilings, they displace the accumulated water and completely seal the void.

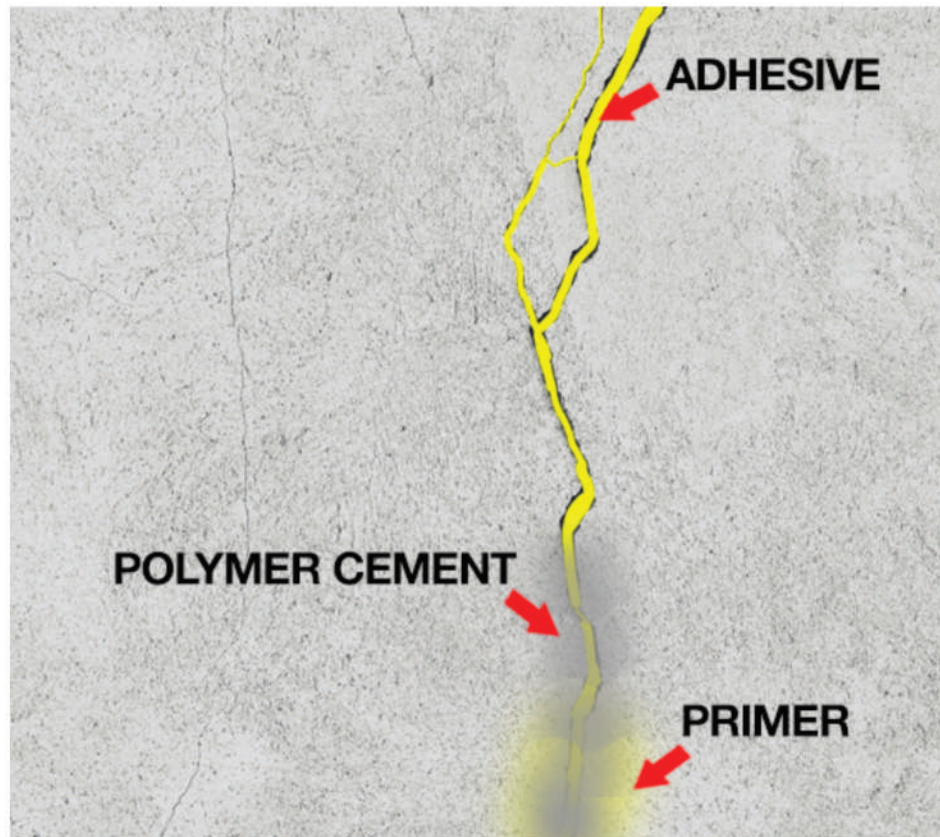
# UNDERGROUND SERVICE LEVEL

Patching, crack repair, protective finish, and expansion joint waterproofing

## .01

### PATCHING

Delaminated concrete surfaces are repaired by installing patches as thin as 5 mm, as needed, thus avoiding slab replacement, in most cases.



## .02

### CRACK REPAIR

Industrial-strength materials and specialized procedures allow for efficient repairs which ensure long-term waterproofing.

## .03

### PROTECTIVE FINISH

Specialized non-slip paint provides both a decorative finish and a protective layer, which prolongs the useful life of the repairs.

## .04

### EXPANSION JOINTS

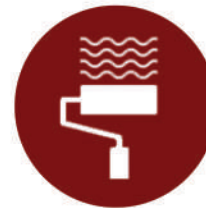
Expansion joints continue expanding and contracting properly after being waterproofed with specialized materials.



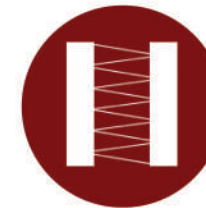
**PATCHING**



**CRACK REPAIR**



**PROTECTIVE FINISH**



**EXPANSION JOINTS**



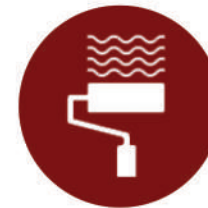
**PATCHING**



**CRACK REPAIR**



**SLOPE REVERSAL**



**DECORATIVE FINISH**

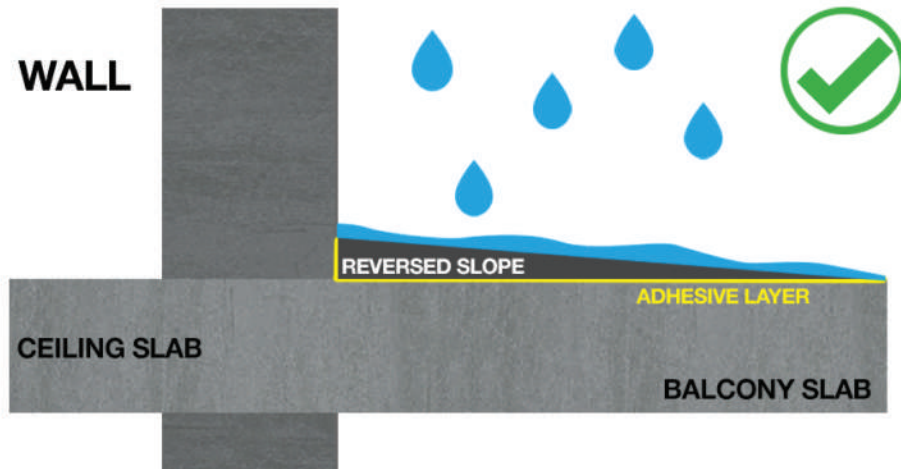
# BALCONIES

Patching, crack repair, slope reversal, and decorative finish

## .01

### PATCHING

Patching is done as part of waterproofing procedures, when necessary. Thin patch applications – made possible by using specialized materials – allow for floor/wall corners to be repaired to ensure long-lasting waterproofing.



## .02

### CRACK REPAIR

If the balcony surface is cracked, water will leak into its unit, and even the one below it, eventually.

Industrial-strength adhesives bind the crack efficiently, helping to restore the slab to its original condition.

## .03

### SLOPE REVERSAL

Normal balcony slope may become flat or inverted towards the unit, causing water to leak in.

Industrial-strength adhesives and polymer cement allow for thin patches to be installed, making it possible to reverse balcony slope to its original position.

## .04

### DECORATIVE FINISH

We use specialized paint to prolong the useful life of our waterproofing applications. It is UV-resistant, protecting the balcony slab more efficiently against weather elements. It is also non-slip, which makes the surface safe.



[info@uwpcanada.ca](mailto:info@uwpcanada.ca)

Phone: (647) 479-9793

[unitedwaterprooferscanada.ca](http://unitedwaterprooferscanada.ca)

1007-130 Queens Quay E, Toronto, Ontario, M5A 0P6